



EVOC A
G R O U P

G 300 Krea

Product Information Pack

Value proposition & Highlights

G 300 Krea Value Proposition



G 300 Krea The evolution of proven reliability

GAGGIA
MILANO

The outstanding in-cup quality of Gaggia Milano in a new generation of reliable and aesthetically appealing design, ideal for hotels, restaurants, and offices with a daily output of up to 150 cups.

G Line wide values

- **Excellence in every cup**

True to Gaggia Milano's heritage, our exclusive Z4000 brewing system ensures outstanding cup coffee quality and a full-bodied aroma.

- **Sustainability at its best**

Achieves an A-class energy rating under EVA-EMP standards, demonstrating outstanding energy efficiency.

Best in class ratings: industry-leading ESG credentials highlight commitment to sustainability leadership.

Distinctive product attributes

- **Exceptional reliability**

The G 300 Krea builds on Krea's success, setting a new reliability standard with durable components like a long-lasting pump for consistent performance in demanding settings.

- **Elevating customer experience**

The 3-cup sensor adjusts delivery for smooth self-service, while the 10" customisable interface boosts visibility and simplifies selection for an intuitive user experience.

G 300 Krea Key product features highlight



G 300 Krea The evolution of proven reliability

GAGGIA
MILANO

The outstanding in-cup quality of Gaggia Milano in a new generation of reliable and aesthetically appealing design, ideal for hotels, restaurants, and offices with a daily output of up to 150 cups.

- Up to 4 soluble canister and 1 canister for R&G.
- The Z4000 brewing system handles various recipes and is removable for quick maintenance.
- 10" customisable touchscreen that intuitively and efficiently guides the user through drink selection.
- Powdered milk version, offering flexibility to meet wider range of customer needs with 40% lower TCO.
- Flexible 160 mm dispensing area with adjustable cup holder, ideal for various cup sizes.
- Secondary door allows grounds removal without a key, making cleaning faster.
- 3-Cup Sensor: smart cup size recognition system that suggests the right drink and prevents spills.
- Compatible with EVOCA Digital Services for telemetry and remote reboot features.

G 300 Krea Technical Datasheet & CFP Scorecard



Technical datasheet

Specifications

- 230-240 V
- 50-60 Hz
- 1900 W – 2900W
- Boiler 500-800 cc
- Z4000 brewing system
- Powdered milk technology
- Smart 3-cup sensor
- 10' customisable interface

Dimensions & capacities

- (wxdxh) 410 x 582 x 770 mm
- Coffee bean hopper: 1.2 or 2.2 kg
- R&G Coffee 1 kg
- Soluble hoppers: milk 1.9 l, chocolate 1.9 l, coffee 1 l, 4th canister 2 l

Versions

- ES + 3IN
- ES + 4IN
- ES + R&G + 3IN
- ES + R&G + 4IN

CFP Scorecard

Key machine features

- Manufacturing Location: Mapello, Italy
- Energy class: A
- Useful life: 7 years

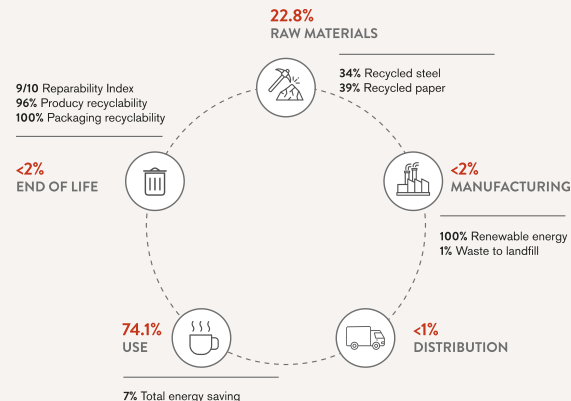
Carbon footprint

- Per annum: 166 kgCO2eq
- Cradle to cradle: 1,159 kgCO2eq
- Cradle to cradle: 6.6 gCO2eq/cup



GAGGIA
MILANO

LCA summary & sustainability KPIs



Features

Design

The G 300 Krea builds on the proven success of Krea Touch.

- **Distinctive Look:** Dynamic lines and bold proportions convey solidity and reliability, perfectly aligned with the G Line.
- **Advanced Interface:** 10" touch display, ergonomically tilted for optimal use, surrounded by customizable LED lighting for a personalized ambiance.
- **Aesthetic and External Bean Hopper:** Available in two capacities, featuring external access and a lockable lid for convenience and security.
- **Enhanced Flexibility:** A top-mounted lock allows seamless installation even in tight spaces.
- **Spacious Cup Area:** Increased height to accommodate cups up to 160 mm, with wide access, dedicated lighting, and easy-to-clean materials.



Internal of the machine

Further enhancements

Internal platform based on the **current Krea Touch** (valued for its reliability) with further improvements.

- **Second door** to empty coffee grounds without a key, speeding up the cleaning process.
- Aesthetic and external coffee canister with keyless refilling (Key is Optional).
- Increased delivery area height, now up to 160 mm, accommodating 19 oz and 20 oz cups.
- Front and top access to soluble canister for added versatility.
- **800cc** boiler versions for higher productivity destination.
- “3-cup sensor” versions (see dedicated slide 20).



Main features and options

Endless possibilities: extreme layout and kit customization

Many layout available:

- ES+3IN
- ES+4IN
- ES+R&G+4IN
- ES+2IN (under dev.)

Dimension (W x H x D) :

- 410 x 770 x 582 mm
- 410 x 831 x 582 mm (2.2 kg Canister)
- Weight: 41 kg

Different productivity Boiler:

- 500cc
- 600cc inspectable
- 800cc (Nov 2025)

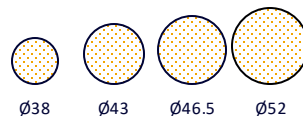
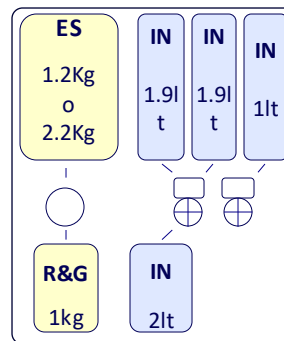
Optional Upgrade /Kit Available

- 3 cup sensor (Oct 2025)
- Enlarged Canister 2.2Kg
- Lock on coffee beans canister

Z4000 platforms:

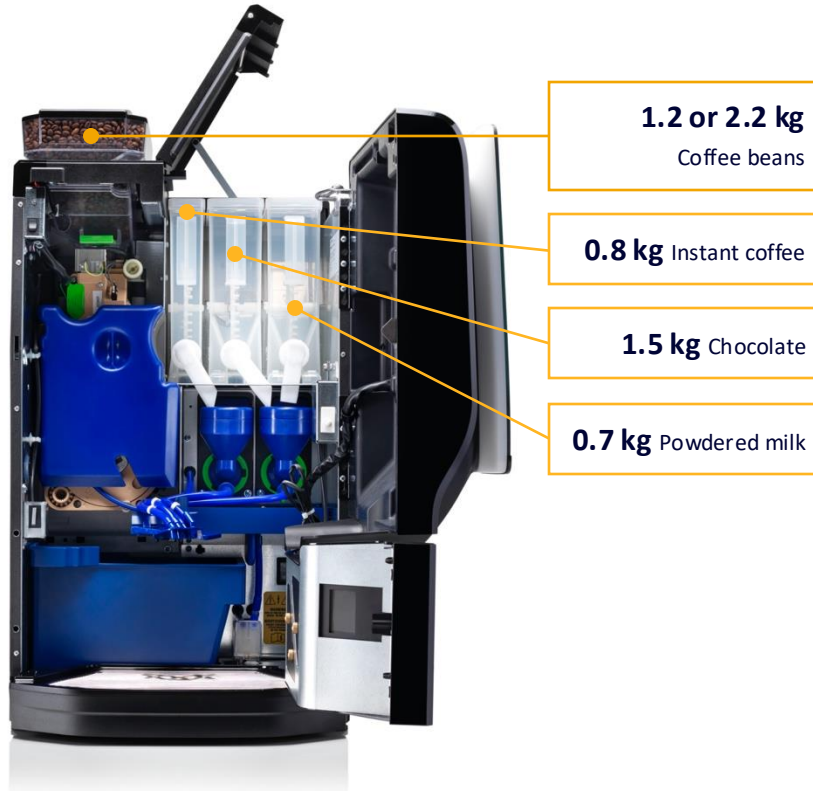
- 4 different sizes of coffee chamber (mm \varnothing)
- Wide range of coffee dose from 6 gr to 21 gr
- 2 different coffee chamber material: Plastic or Stainless steel pre-heated (only \varnothing , 43 and 52 mm)
- Espresso/fresh brew technology

Maximum canisters layout



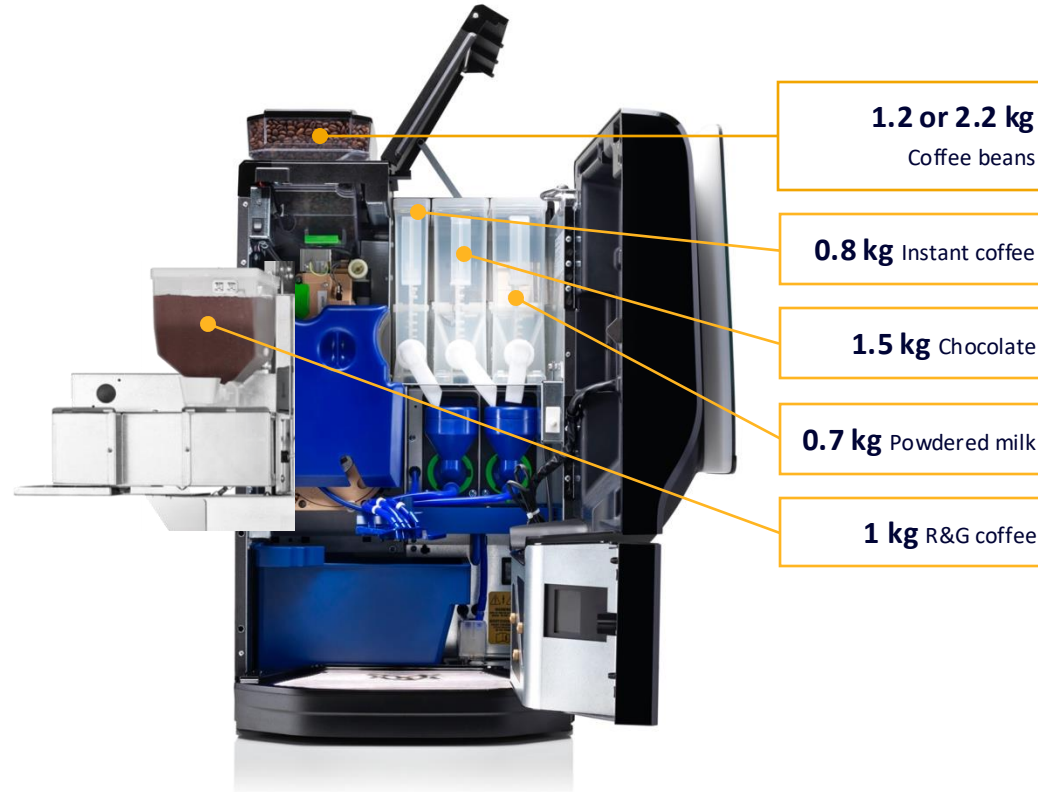
Layout 1

4 Canisters: 1 ES + 3 IN



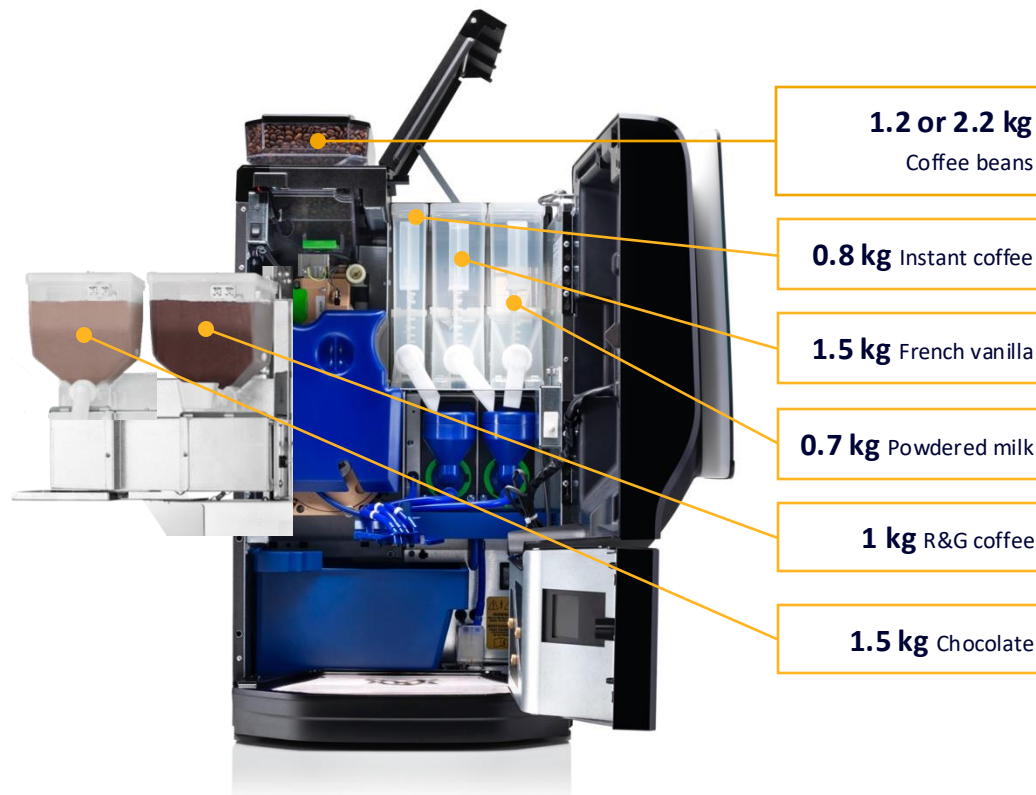
Layout 2

5 canisters : 1 ES + 3 IN + R&G



Layout 3

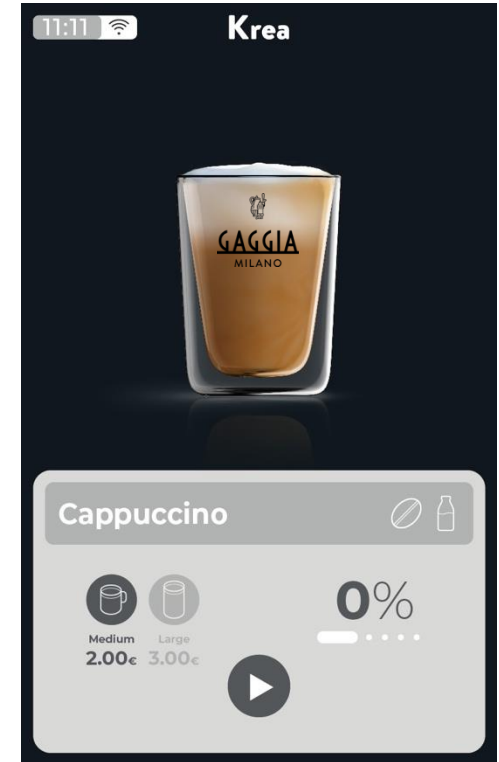
6 canisters: 1 ES + 4 IN + R&G



User Interface

Thanks to the 10-inch touchscreen, customer interaction is intuitive and engaging.

- Graphical User Interface in HTML5
- New icons and Look & feel
- MyGUI tool for soft customization
- Possibility to develop own and deeply customized GUI
- Video Playback During Dispensing
- Carousel mode displaying ingredients filter
- Payment systems options
- Connectivity info
- Wipe screen function

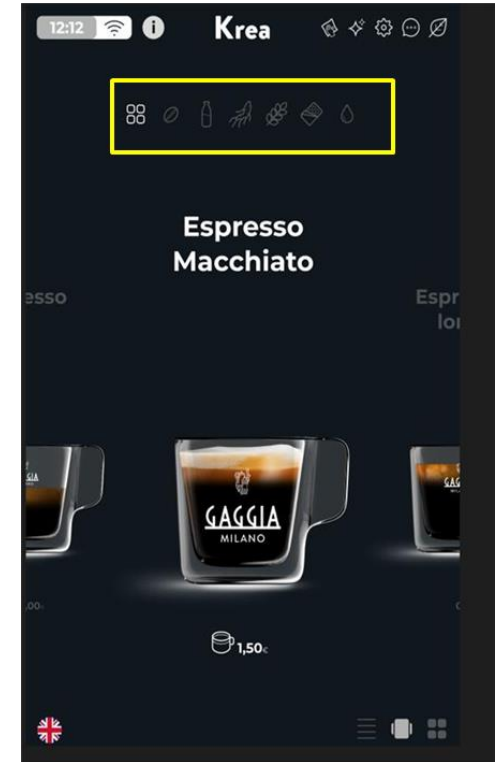
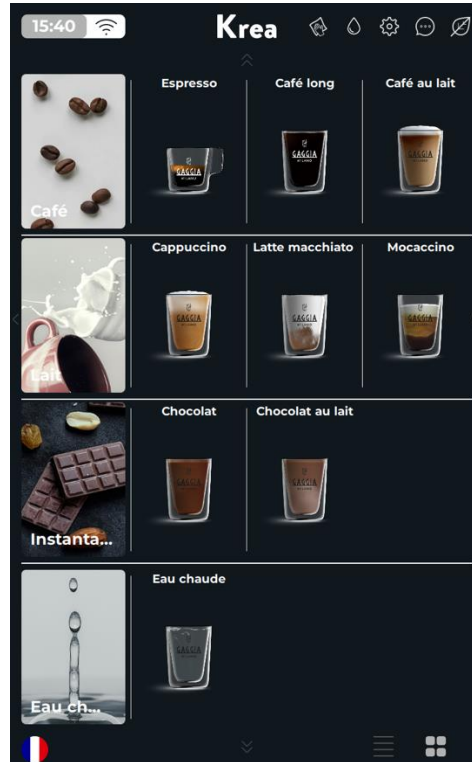


User Interface

Beverage Display modes

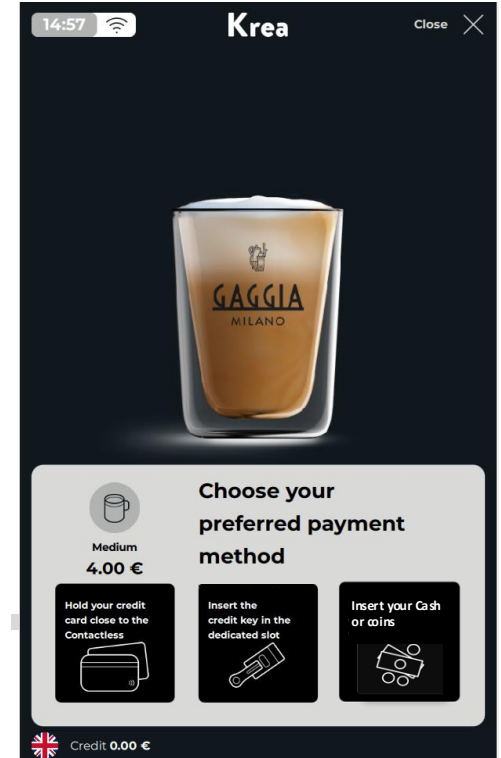
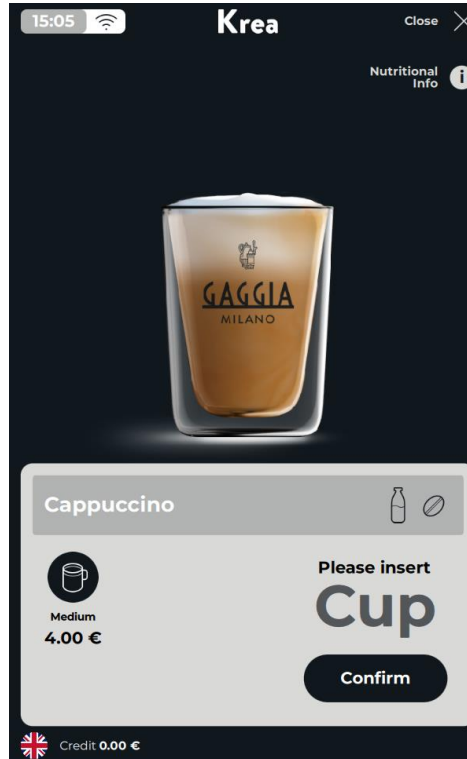
Two display options are available for beverage selection:

- **By category:** Organizes drinks into clear categories, allowing users to horizontally scroll through recipes on a category ribbon. This intuitive layout streamlines navigation, making it easier for users to quickly find and select their preferred beverages.
- **Carousel Mode (Ingredient-Based Filter):** An interactive, horizontal scrolling feature that allows users to filter by main ingredients (e.g., coffee, chocolate, milk), automatically suggesting corresponding beverages with matching characteristics for a seamless and intuitive experience.



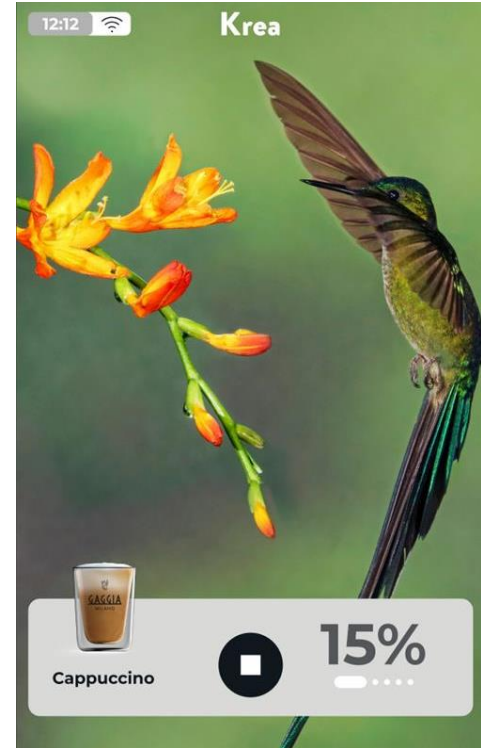
Payment system choice

After confirmation on the customization page, a new screen gives the user the possibility to choose the payment method (credit card , credit key, coins/cash).



Video Playback During Dispensing

A video can be played while the beverage is being dispensed. This feature enhances the customer experience by providing entertainment, promotional content, or brand storytelling, making the wait time more engaging and reinforcing brand identity.

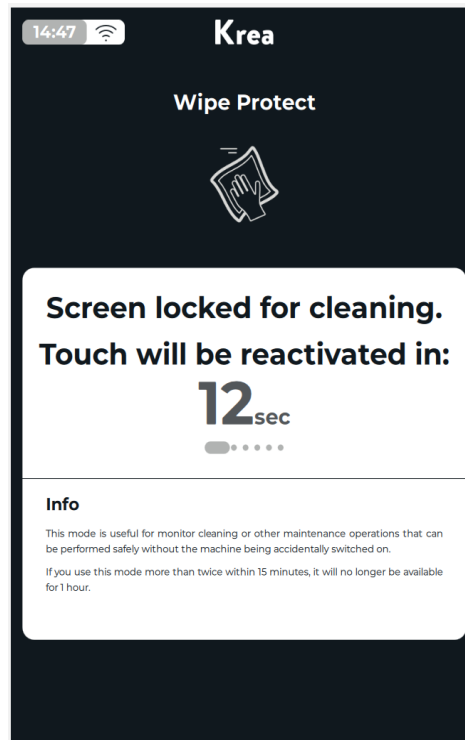


Wipe screen function

The Wipe Screen function temporarily disables the touchscreen for 15 seconds, allowing users **to clean the display without accidentally activating any selections.**

This ensures a hassle-free cleaning process while maintaining optimal hygiene.

If this function is used more than twice within 15 minutes, it will be temporarily disabled for 1 hour.



3-Cup sensor

“3-Cup Sensor”: An innovative LED band that detects the cup size and automatically recommends the perfect beverage for that cup, eliminating overfilling and preventing mess.

This feature is essential for delivering a flawless customer experience while keeping the area clean and efficient.

During the initial setup, a wizard guides the operators through the registration of the three available cup sizes in the shop: Small, Medium, and Large.

This ensures accurate cup detection and seamless operation from the start.



Sustainability

Sustainability

Best-in-class ESG performance

- Evoca reaffirms its commitment to sustainability by achieving a **7.8% reduction** in carbon footprint compared to the previous model. This milestone reflects our continued dedication to responsible innovation and environmental stewardship.

Energy efficiency

- The machine achieved **A energy class** according to the EVA-EMP 3.1b protocol.
- Energy saving dispenser optimizes energy use during periods of inactivity, enhancing overall efficiency.

Responsible materials and sustainable design

- Machine has been engineered with sustainability in mind with component structure that is up to **96% recyclable**.
- The hydraulic circuit is **100% lead-free**, ensuring both user safety and environmental protection.
- Packaging is fully recyclable and designed for easy disposal, further reinforcing the product's eco-conscious approach.



Product Carbon Footprint Scorecard

G 300 Krea



Key Machine Features

G300 KREA

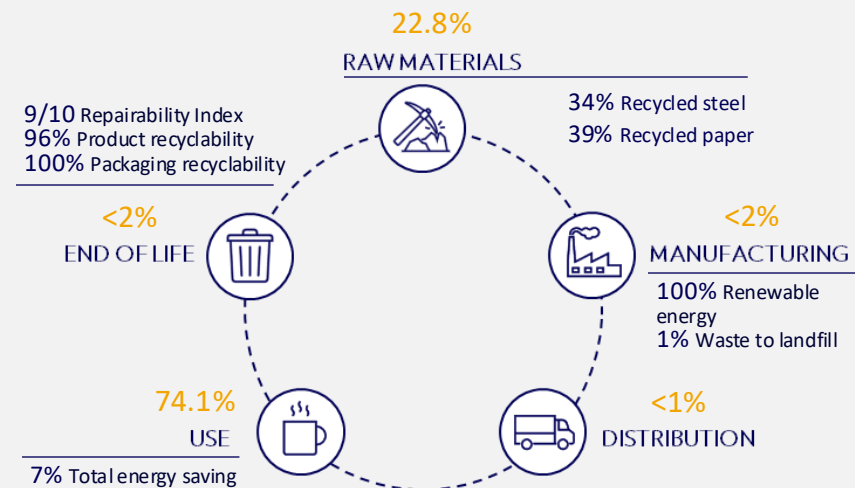
- Brand: Gaggia
- Manufacturing location: Mapello, Italy
- Year launched: 2025
- Energy class: A
- Weight: 41 kg
- Useful life: 7 years

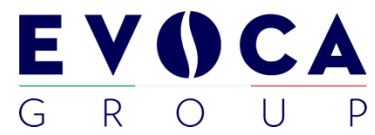


Carbon footprint

- Per annum: 166 kgCO₂eq
- Cradle to cradle: 1,159 kgCO₂eq

LCA Summary and other Sustainability KPIs





www.evocagroup.com